



Stoneacre
Properties



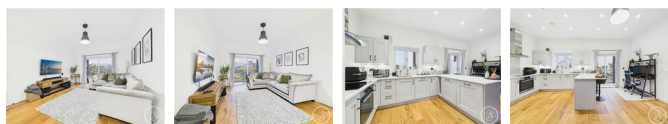
Brodsworth Close, Leeds, LS15 8GP
£255,000

Offered for sale is this stunning apartment overlooking the lake. This beautiful modern home is situated upon a sought-after development close to The Springs shopping and entertainment complex. The property benefits from many upgrades and must be viewed to be fully appreciated. Comprising: entrance hall, open plan living space, two bedrooms, ensuite and bathroom. Externally this wonderful home boasts two balconies and parking.

ENTRANCE HALL WAY

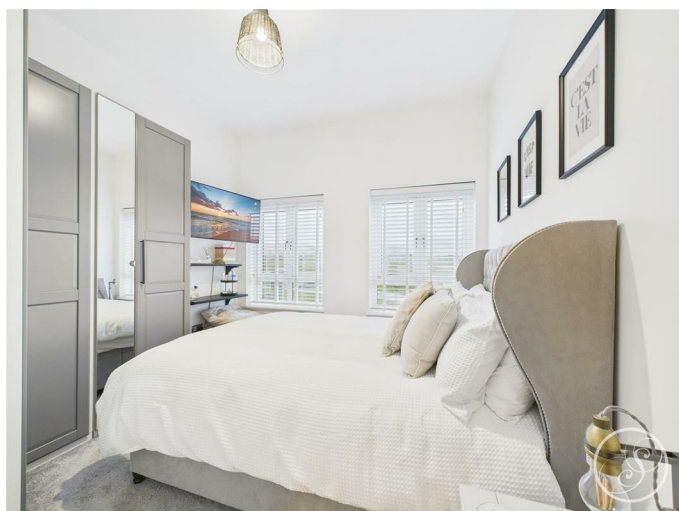
Door to the front. Storage cupboard with space for washing machine. Central heating radiator.

LOUNGE/KITCHEN/DINER



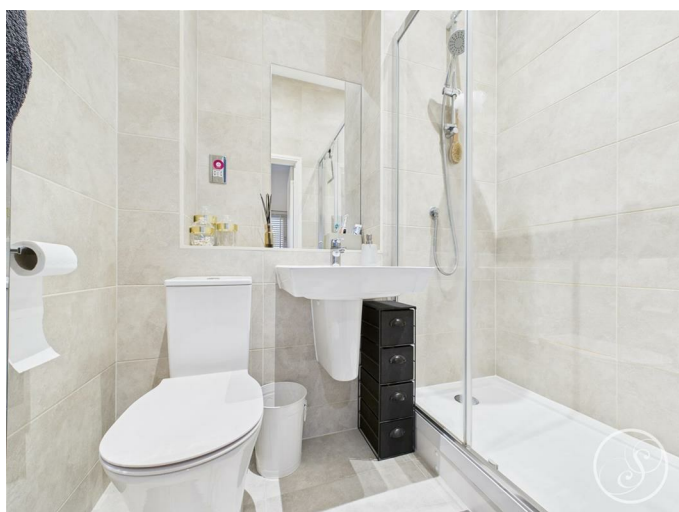
Double glazed sliding doors to the front and rear elevation. Two central heating radiators. Range of wall and base units. Integrated oven with induction hob and extractor fan above. Double glazed window to the front elevation. Integrated fridge/freezer. Storage cupboard.

BEDROOM ONE



Double glazed window to the rear elevation. Central heating radiator. Door leading to en suite.

EN SUITE



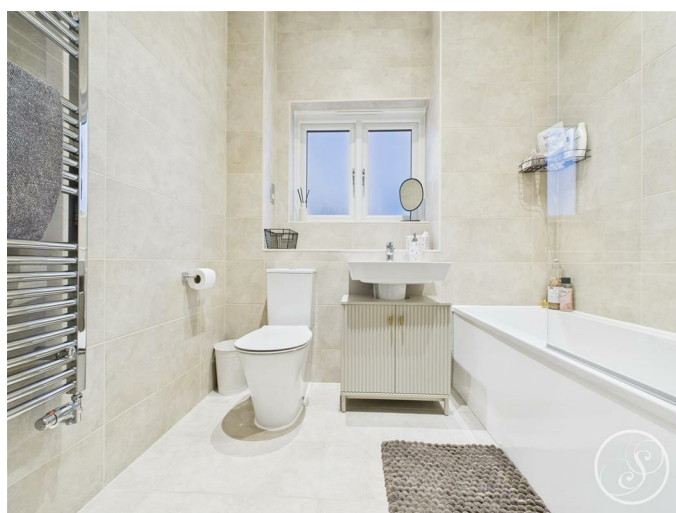
Shower cubicle. Low flush w.c. Wash hand basin. Heated towel rail.

BEDROOM TWO



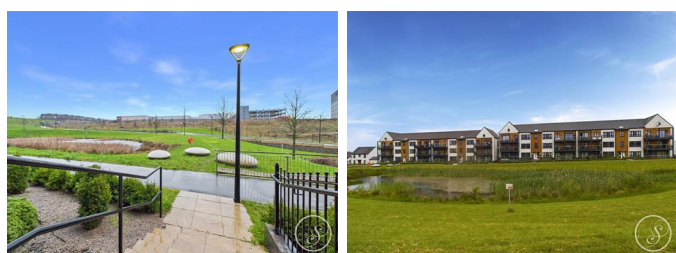
Double glazed window to the rear elevation. Central heating radiator.

BATHROOM



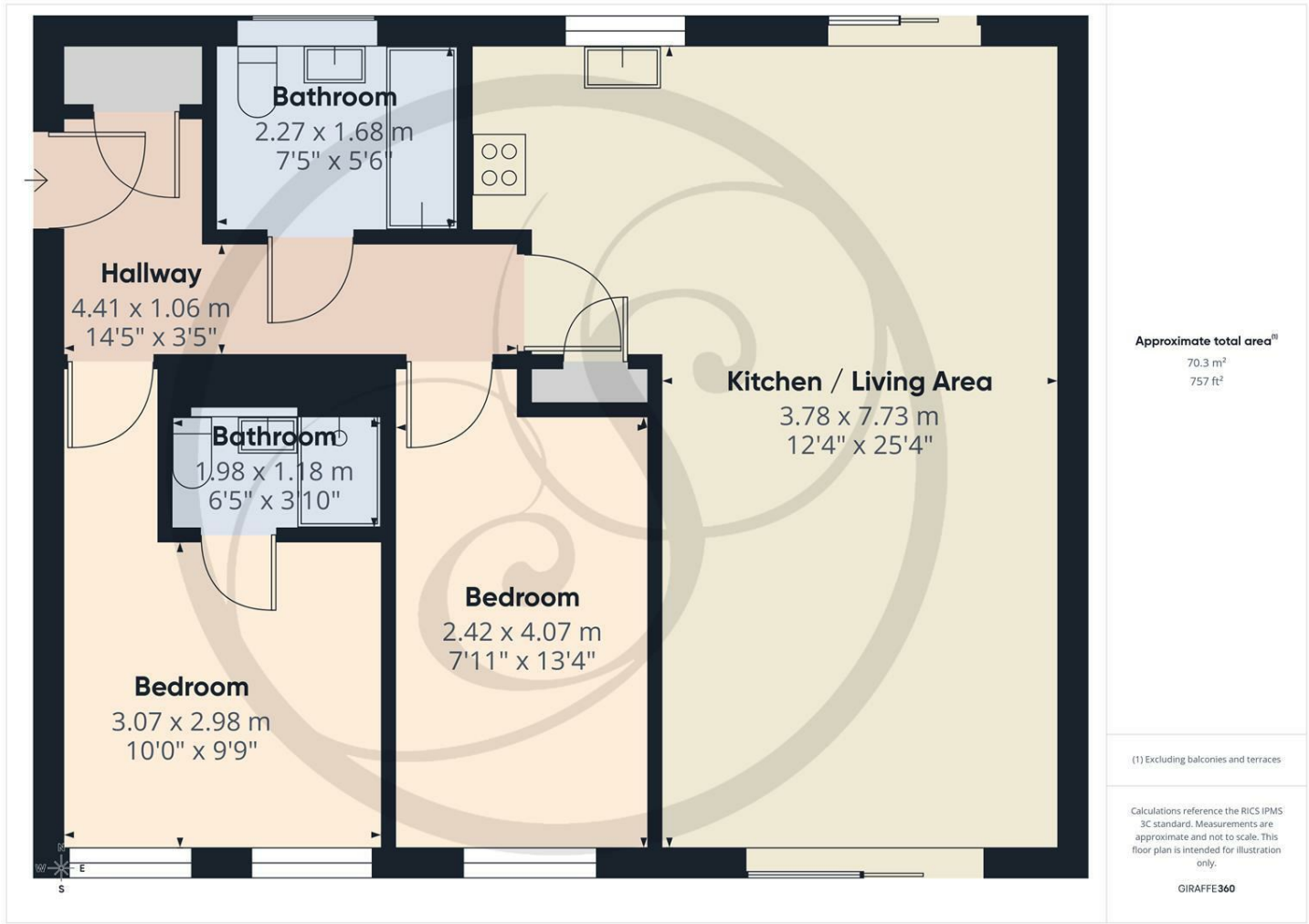
Double glazed frosted window to the front elevation. Low flush w.c. Wash hand basin. Heated towel rail.

EXTERNAL

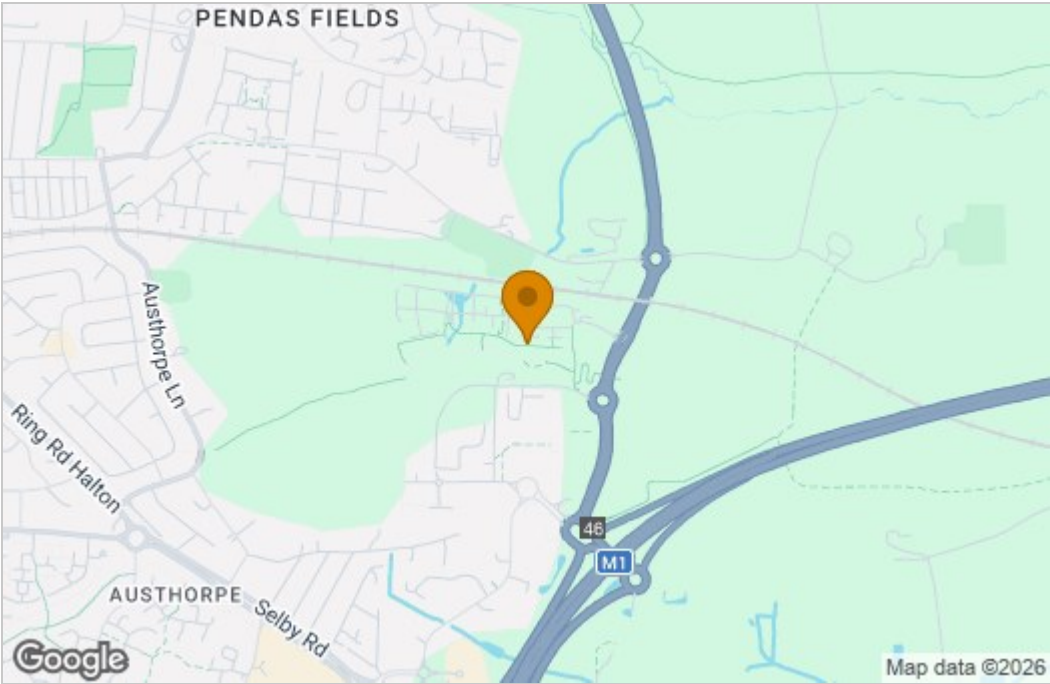


Parking space and two balconies. Electric car charger point.

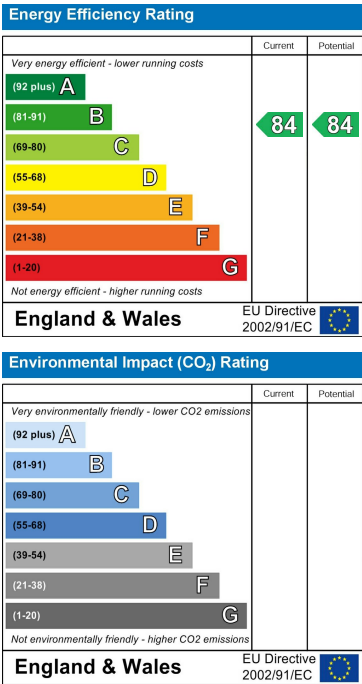
Floor Plan



Area Map



Energy Efficiency Graph



These particulars, whilst believed to be accurate are set out as a general outline only for guidance and do not constitute any part of an offer or contract. Intending purchasers should not rely on them as statements of representation of fact, but must satisfy themselves by inspection or otherwise as to their accuracy. No person in this firm's employment has the authority to make or give any representation or warranty in respect of the property.

